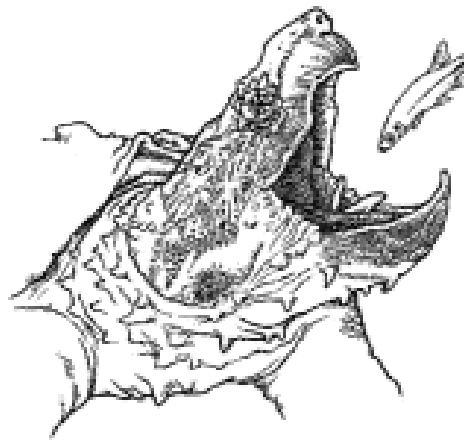


***JOURNAL OF* KANSAS HERPETOLOGY**

NUMBER 39 SEPTEMBER 2011



Published by the Kansas Herpetological Society



<http://www.cnah.org/khs>

KHS OFFICERS (2011)

President – DEREK A. SCHMIDT
7741 SE 101st Street
Overbrook, Kansas 66524
785.224.7549
dschmidt@ksbroadband.net

President-Elect – TRAVIS W. TAGGART
Sternberg Museum of Natural History
3000 Sternberg Drive
Hays, Kansas 67601-2006
785.650.2445
ttaggart@fhsu.edu

Past-President – KATHY ELLIS
10025 SW Jordan Road
Wakarusa, Kansas 66546
785.383.2788
kathyshidler@yahoo.com

Treasurer – DAVID OLDHAM
716 Michigan Street
Oswego, Kansas
316.795.2293
familyoldham@embarqmail.com

Secretary – EVA A. HORNE
Division of Biology
Kansas State University
Manhattan, Kansas 66506
785.532.5929
ehorne@ksu.edu

Historian – SUZANNE L. COLLINS
The Center for North American Herpetology
1502 Medinah Circle
Lawrence, Kansas 66047
785.393.2392
scollins@ku.edu

Editor – CURTIS J. SCHMIDT
Sternberg Museum of Natural History
3000 Sternberg Drive
Hays, Kansas 67601-2006
785.650.2447
cjschmidt@fhsu.edu

STANDING COMMITTEE CHAIRPERSONS

Field Trips - DANIEL G. MURROW
1606 North Plum Street
Hutchinson, Kansas 67501
620.314.8783
dan@iturnrocks.com

Nominating – DAN CARPENTER
13321 Flatland Trail
Derby, Kansas 67037
316-776-1221
b9dezine@yahoo.com

Media & Publicity – ROBIN OLDHAM
716 Michigan Street
Oswego, Kansas
316.795.2293
familyoldham@embarqmail.com

Awards – DANIEL D. FOGELL
Dan Fogell
Southeast Community College
8800 -O- Street
Lincoln, Nebraska 68520
402.437.2870
dfogell@southeast.edu

EDITORIAL BOARD

Associate Editors
JOSEPH T. COLLINS
Kansas Biological Survey

TRAVIS W. TAGGART
Sternberg Museum of Natural History

Copy Editor
DANIEL G. MURROW
Hutchinson, Kansas

Article Editors
EVA HORNE
Kansas State University
GEORGE R. PISANI
Kansas Biological Survey
LYNNETTE SIEVERT
Emporia State University
WILLIAM STARK
Fort Hays State University
JAMES TRIPLETT
Pittsburg State University

LIAISON REPRESENTATIVES

Kansas Department of Wildlife and Parks
KEN BRUNSON
620.672-5911

Kansas Nongame Wildlife Advisory Council
TRAVIS W. TAGGART
785.650.2445

Kansas Chapter – Wildlife Society
CURTIS J. SCHMIDT
785.650.2447

DISTINGUISHED LIFE MEMBERS

ROBERT F. CLARKE
Emporia State University, Emporia, Kansas
(1919–2008)

JOSEPH T. COLLINS
Museum of Natural History, The University of Kansas
Lawrence, Kansas

HENRY S. FITCH
The University of Kansas, Lawrence, Kansas
(1909–2009)

EUGENE D. FLEHARTY
Fort Hays State University, Hays, Kansas

HOWARD K. GLOYD
The University of Arizona, Tucson
(1902–1978)

LARRY L. MILLER
Southwestern College, Winfield, Kansas

GEORGE R. PISANI
Kansas Biological Survey, Lawrence, Kansas

DWIGHT R. PLATT
Bethel College, North Newton, Kansas

HOBERT M. SMITH
The University of Colorado, Boulder, Colorado

EDWARD H. TAYLOR
The University of Kansas, Lawrence
(1889–1978)

Front Cover: An Alligator Snapping Turtle (Macrochelys temminckii). Illustration by Marty Capron, Oxford.

Journal of Kansas Herpetology

NUMBER 39 — SEPTEMBER 2011

TABLE OF CONTENTS

KHS BUSINESS

Results of the Kansas Herpetological Society 2011 Summer Field Trip to Scott State Park <i>Travis W. Taggart</i>	2
Results of the Kansas Herpetological Society 2011 Fall Field Trip to Lovewell State Park <i>Travis W. Taggart</i>	4
Kansas Herpetological Society Annual Meeting Summary of Events.....	6
Kansas Herpetological Society Executive Council Meeting Minutes <i>Suzanne L. Collins</i>	7
Pay Your KHS 2011 Dues.....	7
KHS 2012 Spring Field Trip	7

KANSAS HERPETOFAUNAL COUNTS

Fort Leavenworth Herpetofaunal Survey for 2011 by <i>David C. McMartin</i>	8
Fort Riley Herpetofaunal Survey for 2011 by <i>Mike Houck</i>	9

OF INTEREST

A Pocket Guide to Ohio Snakes	10
A Pocket Guide to the Snakes of St. Vincent National Wildlife Refuge Snake	10

IN MEMORIAM

Thomas Eugene Lewis (1960-2011) by <i>Joseph T. Collins</i>	11
--	----

ARTICLES

Nebraska Specimens of Amphibians and Reptiles in the University of Nebraska at Kearney (Kearney State College) Natural History Collection by <i>Anthony E. Bridger and Keith Geluso</i>	12
--	----

KHS BUSINESS

RESULTS OF THE KANSAS HERPETOLOGICAL SOCIETY 2011 SUMMER FIELD TRIP TO SCOTT STATE PARK

The Kansas Herpetological Society sponsored its first Summer Field Trip in over 20 years. Over 30 participants combed the canyons and prairies of Scott, Gove, and Logan counties for amphibians, turtles, and reptiles both day and night on 29–31 July 2011.

Participants began arriving as early as Thursday evening however the initial counts didn't start until a large group had assembled Friday night. That night (and into early Saturday morning) the group road-cruised Logan and Scott counties.

Friday PM (into Saturday morning)

<i>Common Name</i>	<i>Logan</i>	<i>Scott</i>
Boreal Chorus Frog	100+	--
Bullfrog	6	4
Great Plains Toad	3	--
Green Toad	100+	--
Plains Leopard Frog	100+	--
Plains Spadefoot	200+	6
Woodhouse's Toad	100+	2
Common Snapping Turtle	1	--
Northern Painted Turtle	--	2
Ornate Box Turtle	5	8
Six-lined Racerunner	1	--
Coachwhip	1	3
Eastern Hognose Snake	1	--
Eastern Racer	1	2
Gopher Snake	1	1
Lined Snake	1	2
Milk Snake	--	1
Plains Garter Snake	1	2
Prairie Rattlesnake	5	2
Ringneck Snake	--	1
Speckled Kingsnake	1	--
Western Ribbon Snake	--	2
<i>Total individuals</i>	<i>28+</i>	<i>38</i>
<i>Total species</i>	<i>18</i>	<i>14</i>

Saturday morning the group assembled and made its way to Larry Haverfield's property southwest of Russell Springs in Logan County. Observation methods included turning rocks, pulling apart soapweed leaves, dipnetting, and searching on foot.

Saturday afternoon the group found shade around the lake as temperatures reached the upper 90s; waiting in anticipation for the sun to begin setting. A few individuals set some baited turtle hoop traps in the Lake.

Saturday night was spent road cruising through

Saturday AM (Haverfield's and en route)

<i>Common Name</i>	<i>Logan</i>	<i>Scott</i>
Bullfrog	2	--
Great Plains Toad	3	--
Plains Leopard Frog	3	1
Woodhouse's Toad	5	2
Northern Painted Turtle	--	1
Ornate Box Turtle	5	--
Prairie Lizard	1	2
Six-lined Racerunner	6	--
Coachwhip	1	1
Eastern Racer	4	1
Gopher Snake	3	--
Lined Snake	--	1
Plains Garter Snake	1	--
Prairie Rattlesnake	11	2
Western Ribbon Snake	--	1
<i>Total individuals</i>	<i>45</i>	<i>12</i>
<i>Total species</i>	<i>12</i>	<i>9</i>

Scott and surrounding counties. Recent summer monsoon rains had the local amphibians out in force.

Sunday morning the group checked the turtle traps and then began heading home.



Ryan Urbanek shows off a Northern Painted Turtle collected in a turtle trap Sunday morning. Image by Larry L. Miller.

Saturday PM (into Sunday morning)

<i>Common Name</i>	<i>Logan</i>	<i>Scott</i>	<i>Wichita</i>	<i>Gove</i>	<i>Finney</i>	<i>Ford</i>	
Barred Tiger Salamander	--	--	--	1	--	1	
Boreal Chorus Frog	100+	--	--	100+	--	--	
Bullfrog	8	4	--	--	--	--	
Great Plains Toad	12	--	--	1	--	--	
Green Toad	200+	--	--	--	--	--	
Plains Leopard Frog	100+	--	--	100+	--	--	
Plains Spadefoot	200+	6	--	12	--	--	
Woodhouse's Toad	100+	100+	100+	100+	2	--	
Northern Painted Turtle	3	2	--	--	--	--	
Ornate Box Turtle	16	8	1	1	2	--	
Yellow Mud Turtle	1	--	--	1	--	--	
Prairie Lizard	1	--	--	--	--	--	
Six-lined Racerunner	4	--	1	1	--	--	
Coachwhip	4	3	1	2	--	--	
Eastern Glossy Snake	--	--	--	--	1	--	
Eastern Racer	6	2	--	1	--	--	
Gopher Snake	4	1	1	--	--	--	
Lined Snake	5	2	--	--	--	--	
Longnose Snake	--	--	--	--	2	--	
Milk Snake	--	--	--	--	1	--	
Plains Blackhead Snake	1	--	--	--	1	--	
Plains Garter Snake	3	1	1	--	--	--	
Prairie Rattlesnake	23	2	--	--	2	--	
Western Hognose Snake	--	--	--	1	1	--	
Western Ribbon Snake	--	4	--	--	--	--	
<i>Total individuals</i>	<i>91+</i>	<i>35+</i>	<i>5 +</i>	<i>21+</i>	<i>12</i>	<i>1</i>	<i>165+</i>
<i>Total species</i>	<i>19</i>	<i>12</i>	<i>6</i>	<i>12</i>	<i>8</i>	<i>1</i>	<i>25</i>

Participants were Brian Bartels, Grace Ann Johnson, Dan Johnson, Curtis Schmidt, David Bender, Jessica Bender, Eric Kessler, Suzanne L. Collins, Joseph T. Collins, Travis W. Taggart, Dan Krull, Olaf Larson, Diana Larson, Karl Larson, Max Larson, Lilliya Lar-

son, Kailee Larson, David Wright, Andrew Wright, Dan Carpenter, Mary Kate Baldwin, Lucia Baldwin, Jeremy Sloan, Eric East, Mike Spencer, Brad Birchfield, Kevin Urbanek, Ryan Urbanek, Hayley Urbanek, Ian Stoudenmyer, Larry L. Miller, Mike Caron, Emmett Wright, and Tim Warfel.

- Travis W. Taggart, Field Trip Co-chairperson

Sunday AM (vicinity of Lake Scott)



Larry Haverfield graciously allowed us to explore his properties in Logan County. Image by Larry L. Miller.

<i>Common Name</i>	<i>Logan</i>	<i>Scott</i>	
Bullfrog	1	--	
Common Snapping Turtle	--	2	
Northern Painted Turtle	--	16	
Six-lined Racerunner	2	--	
Coachwhip	1	--	
Eastern Racer	1	--	
Western Ribbon Snake	1	--	
<i>Total individuals</i>	<i>6</i>	<i>18</i>	<i>24</i>
<i>Total species</i>	<i>5</i>	<i>2</i>	<i>7</i>

RESULTS OF THE KANSAS HERPETOLOGICAL SOCIETY
2011 FALL FIELD TRIP TO LOVEWELL STATE PARK

Saturday AM, 17 September 2011 1-2 miles west of KS 14 on Nebraksa border		Saturday PM, 17 September 2011 Roadcruising rural Jewell County	
<i>Common Name</i>	<i>Total</i>	<i>Common Name</i>	<i>Total</i>
Woodhouse's Toad	1	Woodhouse's Toad	1
Blanchard's Cricket Frog	50+	Blanchard's Cricket Frog	100+
Boreal Chorus Frog	1	Great Plains Narrowmouth Toad	20+
Great Plains Narrowmouth Toad	50+	Plains Leopard Frog	10+
Plains Leopard Frog	20+	Bullfrog	14
Bullfrog	2	Great Plains Skink	2
Great Plains Skink	7	Eastern Racer	22
Eastern Racer	12	Great Plains Rat Snake	12
Great Plains Rat Snake	15	Ringneck Snake	21
Ringneck Snake	39	Common Garter Snake	32
Common Garter Snake	25	Brown Snake	2
Ornate Box Turtle	1	Northern Painted Turtle	3
Species 12 Specimens 223+		Species 12 Specimens 239+	

Lauren Albers, Dani Bell, Sneha Bhavansi, Salis Fabregat, Lauren Ferrell, Eric Frank, Alex Garcia, Madeline Hay, Nathan Hron, Owen Kessler, Shawn Khokher, Goathama Kumar, Raygen Lafranca, Janellys Long, Travis Murry, Natalia Mushegian, Ben Myers, Tanner Norris, Chris Ollig, Antonio Pirvey, Austin Rice, Kiara Runnels, Kollin Schechinger, Alexis Snowdy, Jacob Taylor, Bharadwaj Thirumalai, Alina Troung, Meg Taggart, Jess Taggart, Bruce Taggart, Travis W. Taggart, Dan Carpenter, Shelbi Carpenter, Shawn Schmidt, Nathan Carpernter, Derek Schmidt, Brett Schmidt, Dexter Mardis, Tyler Weber, Braden Aylesworth, Zach Byrne, Quillan Brown, Katie Kopper, Rachel Adams, Bonnie Thierne, William Weeks, Stephanie Helad, Travis Murry, Tanner Norris, Ryan Shofner, Sara Unruh, Shelia Bhavanasi, Gabe Nell, Julian Nell, Alina Trong, Kristen Haug, Jeff Haug, Mike Caron, T. C. Back, Ray Bloxson, Mary Ioric, Paige Puper, Dan Murrow, Joseph T. Collins, Suzanne L. Collins, Dan Johnson, David Oldham, Mark Ellis, Kathy Ellis, Victor Wilkinson, Garrett Wilkinson, Brandon Low, Kiarei Runnels, Salis Fabregat, Clint Coffey, Ben Myers, Shelby Klima, Don Becker, Dan Fogell, Curtis Schmidt, Amanda Schmidt, Avery Schmidt, Kelley Tuel, Josh Tuel, Bennett Tuel, Hadley Tuel, Eddie Harriss, Suzanne Miller, Larry Miller, Marla Gubanyi, Julian Gubanyi, Dan Watkins, and Robin Oldham



Sunday AM, 18 September 2011

Common Name	Total
Blanchard's Cricket Frog	100+
Plains Leopard Frog	4
Bullfrog	2
Great Plains Skink	4
Smooth Green Snake*	2
Brown Snake	1
Ringneck Snake	12
Common Garter Snake	5

Species 5
Specimens 109+

* First verified occurrence in 75 years. Two DOR specimens collected 100 yard apart; the first by William Weeks and Zach Byrne the second by Ryan Shofner.

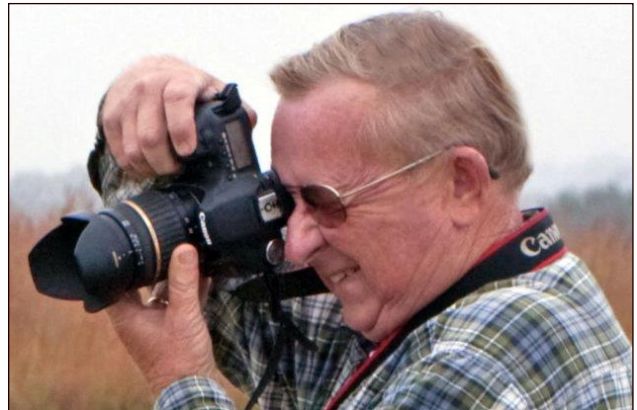
- Travis W. Taggart, Field Trip Co-chairperson



Avery Schmidt displays her captures Saturday morning. Image by Larry L. Miller.



Josh and Kelley Tuel admire a small snake caught by their daughter Bennett. Image by Larry L. Miller.



Larry Miller doing what he does best. Image by Suzanne Miller.



Over thirty-four Plains Leopard Frogs were observed over the weekend. Image by Larry L. Miller.



Ryan Shofner (in cap) shows Joe Collins the Smooth Green Snake he collected. Image by Larry L. Miller.

Kansas Herpetological Society
Annual Meeting Summary of Events

4-6 November 2011

*Great Plains Nature Center
Wichita, Kansas*

All scientific paper sessions for the KHS 38th Annual Meeting will be held in the Great Plains Nature Center, 6232 East 29th Street North, Wichita, Kansas (316-683-5499), on 4-6 November 2011.

Register in the foyer in the Great Plains Nature Center with the KHS Treasurer on Saturday and Sunday: Students (9th Grade through 12th Grade) \$5.00 per person; KHS members \$10.00 per person; non-KHS members \$25.00 per person (includes KHS membership for the next calendar year). K through 8th Grade are admitted free, but must be accompanied by an adult and should be kept quiet during presentations.

KHS AUCTION. The annual KHS auction will be held on Saturday night (5 November) in the Education Center auditorium at the Sedgwick County Zoo. All proceeds from the auction go to the KHS. BEER, SOFT DRINKS, AND SNACKS WILL BE FREE.

ZOO BOOK SALES. The well-known and highly esteemed book seller, Eric Thiss, will display his tremendous diversity of herpetological titles in the Great Plains Nature Center. Buy your favorite books, new and old. Eric is a generous contributor to the KHS auction (as well as a KHS auctioneer).

SPECIAL OFFER. The first 100 registrants for the KHS annual meeting will receive gratis copies of three recent publications by KHS members.

FRIDAY, 4 NOVEMBER 2011

7:00 pm to 11:00 pm: Informal KHS Social Gathering at Dudley's, 8550 West 21st Street North, Wichita, Kansas (at 21st Street North & Tyler; if you get lost, call Dudley's at 316-440-7555). Come talk to other herpetologists and discuss the creatures with which we are so obsessed.

SATURDAY, 5 NOVEMBER 2011

8:00 am to 4:00 pm Registration for both days: Eva Horne (KHS Secretary) and David Oldham (KHS Treasurer) just outside the auditorium of the Great Plains Nature Center. Free coffee, juice, and donuts will be available.

9:00 - 10:15 am

Keynote Speaker -- Richard Kazmaier, West Texas A&M University, Canyon, Texas

Scientific Paper Session 1 in the Great Plains Nature Center Auditorium

10:30 - 11:45 am

Scientific Paper Session 2 in the Great Plains Nature Center Auditorium

11:45 am - 1:15 pm

LUNCH at the restaurant of your choice

1:15 - 2:45 pm

Scientific Paper Session 3 in the Great Plains Nature Center Auditorium

3:00 - 4:15 pm

Scientific Paper Session 4 in the Great Plains Nature Center Auditorium

4:15 pm - 5:00 pm

KHS General Business Meeting with KHS President Derek Schmidt presiding.

KHS Awards Ceremony

5:00 - 6:30 pm

DINNER at the restaurant of your choice

6:30 - whenever

KHS SOCIAL & AUCTION
Education Center Auditorium, Sedgwick County Zoo, Wichita, Kansas

SUNDAY, 6 NOVEMBER 2011

8:00 am Registration continued

9:00 - 10:15 am
Scientific Paper Session 5 in the Great Plains
Nature Center Auditorium

10:30 - 12:00 pm
Scientific Paper Session 6 in the Great Plains
Nature Center Auditorium

12:00 pm
Presentation of the fourth annual George To-

land Award for 2011. This award will be given for the best paper presented at the meeting by a KHS student member on the ecology of North American amphibians, reptiles, and/or turtles. The KHS Awards Committee will select the winner. The recipient must be present at the end of the KHS meeting to receive the commemorative certificate and a check for \$200.00, co-sponsored by the KHS and The Center for North American Herpetology.

KANSAS HERPETOLOGICAL SOCIETY EXECUTIVE COUNCIL MEETING MINUTES

17 September 2011

Lovewell State Park, Jewell County

President Derek Schmidt convened a meeting of the Executive Council. Council members attending were: Travis Taggart, Curtis Schmidt, Suzanne Collins, and David Oldham. The following chairpersons also attended: Dan Fogell, Dan Murrow, Robin Oldham, and Dan Carpenter. Several KHS members also attended.

Details of the KHS annual meeting were discussed:

Derek Schmidt will design a t-shirt, Curtis Schmidt will get a price quote. Derek and Joe Collins will donate \$100 each toward printing of the shirts. The Executive Council approved a budget of \$400 at the February meeting.

Travis Taggart volunteered to be in charge of donuts, coffee, and orange juice for the two day

meeting.

There will be a phone line available so credit cards can be processed.

Joe Collins will provide copies of the program.

Ryan Shofner will get an estimate to make the bronze salamander statues.

Dan Fogell will have the awards ready to present at the meeting.

Dexter Mardis will investigate locations for the Friday night social.

Meeting was adjourned so the group could enjoy the campfire.

Respectfully submitted,
Suzanne Collins
Historian

PAY YOUR 2011 DUES

If you have not already done so, send your calendar 2011 dues (\$15.00 regular, \$20.00 contributing) to:

Eva Horne
KHS Secretary
Division of Biology
Kansas State University
Manhattan, Kansas 66506

Your attention to this matter will ensure that delivery of the *Journal of Kansas Herpetology* will be uninterrupted.

KHS 2012 SPRING FIELD TRIP

The KHS 2012 spring field trip will be to Bourbon County State Fishing Lake. For information as it is posted, be sure to check the KHS web site regularly at:

www.cnah.org/khs/FieldTripSpringInfo.html

For immediate information,
contact:

Travis W. Taggart
KHS Field Trip Co-chairperson

(see inside front cover of this issue)

KANSAS HERPETOFAUNAL COUNTS

Fort Leavenworth Herpetofaunal Survey for 2011

The second annual Fort Leavenworth Herpetofaunal Survey was conducted on Saturday, 17 April 2011, with 34 participants. Over the following two weeks, survey sites were rechecked, augmenting the number of both species and specimens observed. A combined total of 183 specimens representing 15 species were observed, an improvement over 2010. The success of this survey was due in large part to the efforts of local citizen-scientist volunteers.

Materials used as artificial cover objects include existing boards, carpet, and tin as well as additional tin placed since the 2010 survey.

Prior to new cover item placement, most sites were prepared using a weedeater to denude the surface of existing vegetation, helping ensure better cover contact with the ground and encourage rodent nesting/burrowing. Birdseed was scattered beneath new cover items to further stimulate rodent activity. The additional cover items were emplaced in December 2010 to allow sufficient time for rodents to begin utilizing the cover.

Thirty-four participants were divided into

groups roughly equal in number of participants, based on affiliation—family members were kept together, for example. At least one experienced herper led each group for purposes of the survey. These were individuals who, by training, education, or extensive field experience, were considered sufficiently qualified to accurately identify specimens.

Precipitation during the week leading up to the survey consisted of trace amounts early in the week, culminating with thunderstorms producing 1.13 inches the day prior. Year-to-date precipitation as of the survey date was higher than the historical average—8.31 inches compared to 7.17 inches, but most of this was due to heavier-than-normal snowfall earlier in the year. Month-to-date precipitation was 2.85 inches, comparable to the historical average of 2.27 inches.

A temperature and relative humidity spot reading was taken on-site using a commercially-available digital thermometer/hygrometer at 10:50 a.m., registering 61 degrees Fahrenheit and 56% humidity. Skies were overcast, and just prior to the 10 a.m.

<i>Species</i>	<i>Total Number Observed</i>	
	<i>2011</i>	<i>2010</i>
<i>Frogs and Toads</i>	±108	±192
American Toad	±27	3
Blanchard's Cricket Frog	±12	8
Boreal Chorus Frog	±28	180+ chorusing
Bullfrog	±25	1
Eastern Gray Treefrog	1 calling	0
Plains Leopard Frog	±15	0
<i>Lizards</i>	10	15
Five-lined Skink.....	10	15
<i>Snakes</i>	65	35
Eastern Racer	5	4
Brown Snake	1	1
Milk Snake.....	5	2
Prairie Kingsnake.....	1	0
Western Rat Snake	2	1
Western Worm Snake.....	8	6
Ringneck Snake	40	18
Common Garter Snake.....	3	1

initial meeting for the survey, a light rain fell for a few minutes at the airfield. At the conclusion of the survey at 1:00 p.m. another spot reading was taken, registering 69 °F and 47% humidity. The moon phase at this time was a waning gibbous, with last quarter officially on 24 April.

The accompanying table consists of animals observed during the official survey on 23 April 2011 as well as during informal surveys in the following weeks. Species names follow Standard Common and Current Scientific Names for North American Amphibians, Turtles, Reptiles, and Crocodilians (Collins & Taggart 2009).

Species not found this year, but which were observed in 2010, were the Western Ribbon Snake and the Copperhead. Significant finds this year were the addition of the Plains Leopard Frog (not observed last year), Eastern Gray Tree Frog (not observed last year), and the Prairie Kingsnake (not seen on the installation since 2003).

Participants were Alex Becker, Kyle Becker, Ryan Becker, Tom Becker, Tricia Becker, Garrett Bennett, Holden Bennett, Mitch Ben-

nett, Gerard Brungardt, Luke Brungardt, Petra Brungardt, Tom Brungardt, Michael Caron, Joseph Collins, Suzanne Collins, Dustin Dougherty, Brandy Gibson, Brett Gibson, Carol Gibson, Marc Gibson, Nick Gomez, Cheryl Hook, Dan Johnson, Grace Ann Johnson, Shirlene Johnson, Dillon Knopp, Pam Knopp, Dan Krull, Logan Martin, Chris McMartin, Sarah McMartin, Kyle Moodie, Cameron Vandiver, Kyle Watson

Special thanks to Matt Nowak, for his extensive coordination with various installation agencies to enable the survey to be conducted, and the provision of placards for marking the cover items. George Pisani, for his provision of 44 pieces of additional tin to augment the transect sites. Dan Krull, for his assistance in preparing survey transects, and his unbridled enthusiasm. Joseph Collins, for his help in publicizing the event, and his mentorship. Bill Busby, for providing maps indicating likely habitat for redbelly and smooth earth snakes.

David C. (Chris) McMartin, Lt Col, USAF
Fort Leavenworth, Kansas

Fort Riley Herpetofaunal Count Final Report for 2011

The 2011 Fort Riley Herp Count was held on 6 May 2011.

Participants were Eva Horne, Pat Silovsky, Kyle Ochs, Dan Mulhern, Victor Wilkinson, Brecken Wilkinson, Elby Adamson, Josh Keim, Blake Bradford, Taliesin Hutson, A.J. Reinke, Susan Blackford, Michele McNulty, Vernon Tabor, Keith Murrow, Lisa Flores, Mitch Bennett, Garrett Bennett, Holden Bennett, Shane Adamson, Shawn White, Tom Becker, Tricia Becker, Kyle Becker, Ryan Becker, Alex Becker, Clyde Ferguson, Lene Keating, Valerie Arkell, Judi Halasi, Shannon Koerner, Chris McMartin, Mike Houck, Wade Keltner, Tom Duckworth, Steve Wahle, Frank Rottinghaus, Jeff Keating, Brett Parsons, Josh Pease, Mackenzie Pease, Derek Moon, and Shawn Stratton.

Species	Numbers
Common Snapping Turtle.....	4
Northern Painted Turtle	2
False Map Turtle	6
Slider.....	18
Eastern Collared Lizard.....	9

Great Plains Skink	35
Western Slender Glass Lizard	1
Ringneck Snake	672
Eastern Racer	3
Great Plains Rat Snake	5
Western Rat Snake	1
Prairie Kingsnake.....	1
Milk Snake.....	10
Gopher Snake	2
Northern Water Snake.....	4
Common Garter Snake	7
Lined Snake.....	2
Copperhead	2
Northern Cricket Frog.....	233
Cope's Gray Treefrog.....	1
Boreal Chorus Frog	3
Plains Leopard Frog	35
Bullfrog	128
Great Plains Narrowmouth Toad.....	10

Total Species 24
Total Individuals 1194

Mike Houck
Fort Riley, Kansas

OF INTEREST

A POCKET GUIDE TO OHIO SNAKES

by Jerry D. Collins, John P. Mathews & Joseph T. Collins with photographs by Suzanne L. Collins, John P. Mathews & Others

Download a gratis pdf of A POCKET GUIDE TO OHIO SNAKES at

http://www.cnah.org/cnah_pdf.asp

Sponsored by the Greater Cincinnati Herpetological Society, Ford Nature Center (Youngstown), The Mathews Family Trust (Cincinnati), Touchstone Energy (Washington, D.C.), Cincinnati Zoo & Botanical Gardens, Ohio University Southern Nature Center (Ironton), and The Center for North American Herpetology (Lawrence, Kansas).

This pocket guide covers the 25 kinds of snakes found in Ohio, all illustrated with exquisite color images and up-to-date range maps. Pocket guides are an important way to get people involved with wildlife conservation, because the more people become familiar with a group of animals, the more they have invested in them and their habitat. In this guide, the authors reveal the abundant serpent fauna of the Buckeye State, with sections on size, description, and habits.

Contains information on all Ohio serpents and organizes them in the Family Colubridae (Harmless Egg-laying Snakes), Family Dipsadidae (Harmless Rear-fanged Snakes), Family Natricidae (Harmless Live-bearing Snakes), and Family Crotalidae (Pitvipers). Taxonomy is completely updated to reflect recent discoveries using molecular evidence and modern analysis.

The Center for North American Herpetology

Date of Publication: April 2011

60 pages, softbound

55 color images, 25 color maps

ISBN: 978-0-9721937-2-6

For those wishing a paper version, single copies

of A POCKET GUIDE TO OHIO snakes are available free by simply sending a self-addressed manila envelope (4 x 6 inches or larger) with \$1.56 first class postage affixed to:

CNAH

Ohio Snake Guide

1502 Medinah Circle

Lawrence, Kansas 66047

A POCKET GUIDE TO THE SNAKES OF ST. VINCENT NATIONAL WILDLIFE REFUGE FLORIDA

by Joseph T. Collins, Suzanne L. Collins & Travis W. Taggart with photographs by Suzanne L. Collins

Now Available Online as a PDF

This pocket guide covers the 20 kinds of snakes found on the island wilderness of St. Vincent National Wildlife Refuge in the panhandle of Florida, all illustrated with exquisite color images. In this guide, the authors reveal the abundant snake fauna of St. Vincent Island, with information on size, description, and habits, as well as maps showing where these serpents are found on the refuge.

Sponsored by the U.S. Fish & Wildlife Service (U.S. Department of the Interior), Supporters of St. Vincent NWR, and The Center for North American Herpetology.

For a complete modern checklist of all the amphibians, reptiles, turtles, and crocodilians of Florida, go to:

http://www.cnah.org/state_nameslist.asp?state_id=9

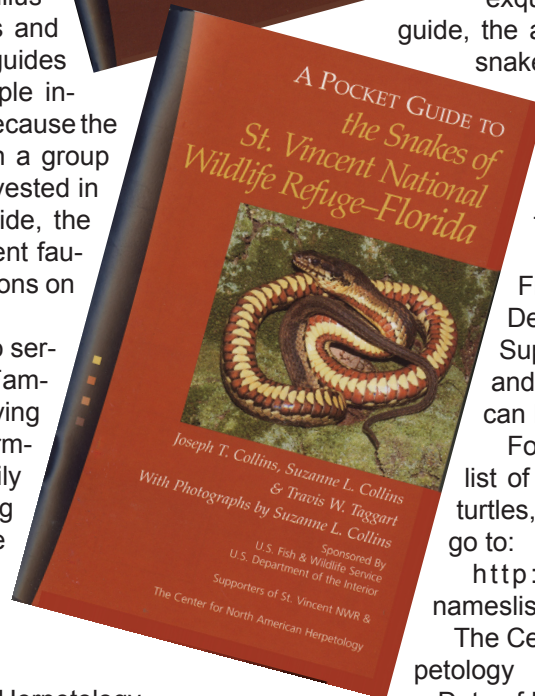
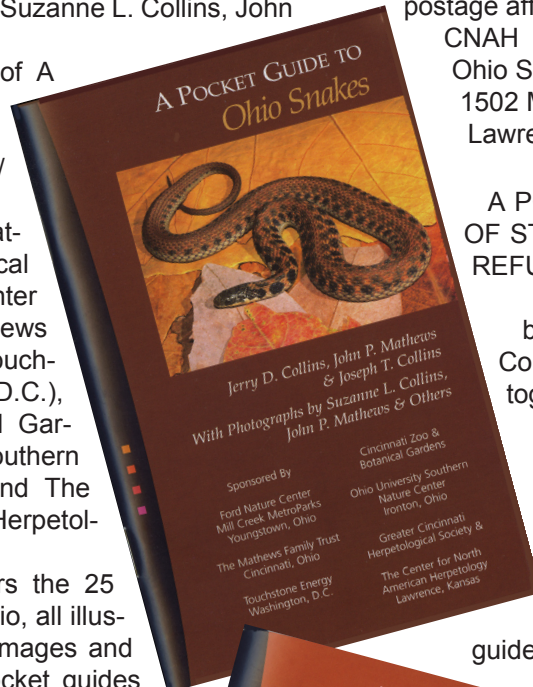
The Center for North American Herpetology

Date of Publication: March 2011

ISBN 978-0-9721937-1-9

52 pages, 44 color images, 21 color dot maps, softbound.

To download a gratis copy of this booklet, go to http://www.cnah.org/cnah_pdf.asp



IN MEMORIAM

In Memoriam: Thomas Eugene Lewis 1960-2011

Thom Lewis died on 23 June 2011 in a plane crash on Eglin Air Force Base in the panhandle of Florida. He was 50. Thom was the U.S. Fish and Wildlife Service biologist for St. Vincent National Wildlife Refuge from 1992 to 2008. He was a constant advocate for conservation of the herpetofauna on the island refuge, particularly the Gopher Tortoises and Eastern Diamondback Rattlesnakes that lived there in such abundance. In addition, he promoted many research projects that were eventually funded and accomplished. More recently, he was a wildlife pilot for the USFWS, primarily involved with migratory bird programs. When he died in the crash, he was doing what he loved.

Thom was born on 15 October 1960 in Pasadena, Maryland. He received his Bachelors Degree in 1985 from the University of Maryland and was pursuing a Masters Degree from Texas A&M University at the time of his death. Thom oversaw the endangered Red Wolf Program for the U.S. Fish and Wildlife Service on St. Vincent NWR from 1992 to 2008, and one of his many legacies is the more than twenty Red Wolf pups that were born, survived to adulthood, and were transferred to repatriation programs at other areas across the nation.

Condolences may be sent to JoAnne Lewis, P. O. Box 712, Apalachicola, Florida 32329.

In memory of Thom, please send donations to the:

Florida Wild Mammal Association
198 Edgar Poole Road
Crawfordville, Florida 32327

In chronological order, a brief bibliography of the published herpetological papers by Thomas E. Lewis includes:

- Means, D. Bruce and Thomas E. Lewis. 1997. Geographic distribution: *Amphiuma means*. Herpetological Review 28(1): 47.
- Peacock, Terry and Thomas E. Lewis. 2000. Geographic distribution: *Deirochelys reticularia*. Herpetological Review 31(2): 110-111.
- Thomas E. Lewis and Joseph T. Collins. 2000. Geographic Distribution: *Regina rigida*. Herpetological Review 31(3): 187.
- Lewis, Thomas E., Lisa K. Irwin, and Kelly J. Irwin. 2001. Geographic distribution: *Pseudemys nelsoni*. Herpetological Review 32(2): 117.



Image by Suzanne L. Collins, CNAH

- Lewis, Thomas E. and Kelly J. Irwin. 2001. Geographic distribution: *Macrochelys temminckii*. Herpetological Review 32(4): 274.
- Irwin, Kelly J., Thomas E. Lewis, Jay D. Kirk, Suzanne L. Collins, and Joseph T. Collins. 2003. Status of the Eastern Indigo Snake (*Drymarchon couperi*) on St. Vincent National Wildlife Refuge, Franklin County, Florida. Journal of Kansas Herpetology 7: 13-20.
- Lewis, Thomas E. 2006. St. Vincent National Wildlife Refuge Fish, Amphibian, Reptile and Mammal List. Publication of the U.S. Fish and Wildlife Service, Apalachicola, Florida. 8 pp.

- Joseph T. Collins

ARTICLES

Nebraska Specimens Of Amphibians and Reptiles in the University of Nebraska at Kearney (Kearney State College) Natural History Collection

Anthony E. Bridger and Keith Geluso*
Department of Biology
University of Nebraska at Kearney
Kearney, Nebraska 68849

*Corresponding author: gelusok1@unk.edu

Abstract: Herein we present the holdings of amphibians and reptiles collected in Nebraska housed in the natural history collection at the University of Nebraska at Kearney, formerly known as Kearney State College. We provide specific localities of occurrence for each specimen along with the number of individuals collected from each site. We found records for 358 specimens collected from the state and examined 317 individuals. Although two publications were published in 2010 regarding the occurrences of herpetofauna in Nebraska, we present new county records that add to the known distributions of herpetofauna in the state. Awareness and access to records of localities for these specimens will further aid in the understanding of distributions for amphibians and reptiles in Nebraska.

INTRODUCTION

Hudson (1942) published the first comprehensive account regarding the distributions of amphibians and reptiles in Nebraska, including range maps and specific localities of occurrence for 56 species. Over 40 years later, Lynch (1985) updated distributional range maps for 13 species of amphibians and 47 species of reptiles. In 2010, Ballinger et al. (2010) and Fogell (2010) updated range maps for 13 species of amphibians and 48 species of reptiles with known occurrences in Nebraska.

Range maps in Lynch (1985), Ballinger et al. (2010), and Fogell (2010) are based on voucher specimens or voucher photographs in museum collections, but none of these publications present specific locality data for locality dots on distribution maps (Lynch 1985, Ballinger et al. 2010) or shaded counties with known occurrences (Fogell 2010). Details for most voucher specimens referenced in those publications likely can be accessed via websites such as HerpNet (<http://www.herpnet.org/>); however, one important repository for specimens in Nebraska is not accessible via the web—the collection of amphibians and reptiles housed at the University of Nebraska at Kearney (UNK; formerly known as Kearney State

College), Kearney, Nebraska. This collection contains more than 400 specimens of herpetofauna from 11 different states, with the majority of specimens from Nebraska. Herein, we report details on the inventory for those specimens collected in Nebraska. We provide the county and specific localities of occurrence for each Nebraska specimen, along with the number of individuals collected from each site. Our research will further aid in the understanding of distributions for herpetofauna in the state and allow researchers to readily observe the specific holdings in the collection.

METHODS AND MATERIALS

In spring 2010, we sorted all the Nebraska specimens in the UNK natural history collection from those collected in other states. Next, we both independently identified and verified each specimen from Nebraska to species with taxonomic keys (i.e., Smith 1978, Smith and Brodie 1982, Fogell 2010). Furthermore, we verified entries in the UNK catalog with those on specimen tags or tags contained in bottles. For some catalog entries, we determined that more than one individual corresponded with a catalog number; we verified this by examining original field notes of the collector for that spe-

cific locality and date.

The order and names (common and scientific) of species presented below follow Fogell (2010). In records of occurrence for each species, county names are capitalized and presented in alphabetical order. For specimens that we examined and verified, details are listed under "Specimens examined". For specimens listed in the UNK catalog that we were unable to locate or examine, details are listed under "Specimens not examined". Some of the missing specimens probably represent those that lacked specimen tags, which likely were inadvertently removed with use in past herpetology classes. Other missing specimens likely have been lost, destroyed, or discarded over the years. Numbers in parentheses that follow each locality represent the number of individuals in the collection. For specimens of larvae or eggs, we verified that specimens existed but assumed identification to be accurate. A single collection of numerous eggs or small larvae were counted as a single record. In a few instances, we added further details to localities via brackets. Furthermore, we geo-referenced all unambiguous localities and recorded them in decimal degrees using a download of Google Earth (www.google.com/earth/index.html).

RESULTS

We found records for 358 total specimens of reptiles and amphibians collected from Nebraska, including 317 individuals that we personally examined and verified. The last specimen entered in the collection was collected on 20 March 1995 but was entered 1 February 1996. We discovered 6 county records not reported by Fogell (2010), which include the following: *Anaxyrus cognatus* (Dawson County), *Ambystoma mavortium* (Sherman and Thomas), *Apalone spinifera* (Dawson), and *Crotalus viridis* (Hooker and Thomas). We also discovered a number of records not reported in Ballinger et al. (2010), including *A. cognatus* (Dawson County), *Pseudacris maculata* (Webster), *Lithobates blairi* (Dawson), *Lithobates catesbeianus* (Dawson and Dixon), *Spea bombifrons* (Buffalo and Kearney), *A. mavortium* (Thomas), *Chrysemys picta* (Dawson), *Terrapene ornata* (Antelope), *A. spinifera* (Dawson), *Holbrookia maculata* (Red Willow), *Sceloporus consobrinus* (Red Willow), *Coluber constrictor* (Kearney), *Pantherophis emoryi* (Franklin), *Pituophis catenifer* (Webster), *Diadophis punctatus* (Buffalo, Dawson, and Sherman), *Heterodon*

platirhinos (Custer), *Tropidoclonion lineatum* (Sherman), and *C. viridis* (Custer, Furnas, and Hooker). In Ballinger et al. (2010), some locality dots were located on county lines making it difficult to interpret which county specimens were obtained from in their publication. Our list of county records above represents those that represent obvious new county records.

One specimen, which was purposely not reported in Fogell (2010, D. Fogell in litt.), included a Ringneck Snake (*D. punctatus*) from Sioux County. This record represents a 350 km range extension from the closest records in Keya Paha County (Lynch 1985). Because this potentially represents a significant westward expansion in distribution in the United States, we attempted to verify the validity of the specimen. We contacted the collector (C. True) and learned that there are no field notes associated with the specimen. The collector also could not specifically remember collecting the snake. Although we could not find such supporting evidence, we have no specific reason why this record is not valid.

In the UNK catalog, a Smooth Green Snake (*Liophorophis vernalis*) was reported from Buffalo County but the catalog states that the individual was captured and released. We include the locality below, but we do not include this in our specimen count or as a county record due to the lack of a verifiable voucher specimen or photograph.

RECORDS OF OCCURRENCE

Great Plains Toad (*Anaxyrus cognatus*)

Specimens examined (total 7). BUFFALO: City of Kearney, South Railroad and D Avenue; 40.69451°N, 99.07629°W (1). CHERY: 12 mi S, 1 mi W Nenzel; 42.75450°N, 101.12422°W (1), 17 mi S, 8.5 mi W Nenzel; 42.67815°N, 101.26869°W (1), 16 mi S, 2 mi W Nenzel; 42.69597°N, 101.14361°W (1). DAWSON: 1 mi N, 1.25 mi E Gothenburg; 40.94491°N, 100.13650°W (1), 2 mi E Overton; 40.73360°N, 99.49967°W (1), 1.75 mi N Gothenburg on county road; 40.95929°N, 100.16088°W (1).

Woodhouse's Toad (*Anaxyrus woodhousii*)

Specimens examined (total 34). BUFFALO: 3 mi N, 2 mi W Kearney; 40.74209°N, 99.12202°W (1), 2 mi S, 6 mi E Ravenna; 40.998267°N, 98.798159°W (1 larva), Kearney, South Railroad and D Avenue;

40.69451°N, 99.07629°W (4), 5.6 mi S, 4.6 mi W Gibbon; 40.66508°N, 98.93391°W (3 and 1 group of eggs). CUSTER: 2.5 mi SE Callaway; 41.25959°N, 99.90034°W (1). DAWSON: 1 mi N, 1.25 mi E Gothenburg; 40.94491°N, 100.13650°W (1), 1 mi N Gothenburg; 40.94439°N, 100.16047°W (1), Darr; 40.82083°N, 99.88333°W (1). FURNAS: 0.5 mi E Arapahoe; 40.30389°N, 99.89014°W (1), 1 mi S, 0.5 mi E Arapahoe; 40.28878°N, 99.88821°W (2), 1 mi S, 1.5 mi E Arapahoe; 40.28924°N, 99.86971°W (1). KEARNEY: 4 mi S, 0.5 mi W Kearney; 40.64095°N, 99.0944°W (2), 2 mi S, 7.5 mi E Kearney, sandpit; 40.68083°N, 98.9440°W (1). RED WILLOW: 1 mi N, 0.5 mi W Indianola; 40.25032°N, 100.4288°W (2), 3.75 mi S, 0.75 mi E Indianola; 40.18116°N, 100.40584°W (1), 0.75 mi S Indianola; 40.22463°N, 100.41744°W (1). WEBSTER: 1 mi N, 0-2.25 mi W Guide Rock (2), 1 mi N, 2.25 mi W Guide Rock; 40.08944°N, 98.3729°W (3), 1.25 mi S Red Cloud; 40.07007°N, 98.51881°W (1), 1 mi N, 3.75 mi W Guide Rock; 40.08944°N, 98.40085°W (3).
Specimens not examined (total 1). CHERRY: 16 mi S, 2 mi W Nenzel; 42.69597°N, 101.14361°W (1).

Blanchard's Cricket Frog (*Acris blanchardi*)
Specimens examined (total 12). BUFFALO: 5.5 mi E Pleasanton; 40.96705°N, 98.98083°W (1). FURNAS: 0.7 mi S Arapahoe, Hwy 283; 40.29332°N, 99.89772°W (7). RED WILLOW: 0.5 mi S, 1.25 mi W Bartley; 40.24571°N, 100.33013°W (1). WEBSTER: 0.5 mi S, 2.5 mi W Guide Rock; 40.0657°N, 98.37732°W (1), 1 mi S Cowles; 40.15719°N, 98.44809°W (2).

Boreal Chorus Frog (*Pseudacris maculata*)
Specimens examined (total 8). DAWSON: 96 Ranch, T11N, R25W, Sec 35, [3 mi S, 1.6 mi E Gothenburg]; 40.88365°N, 100.12949°W (4), 1105 17th Street, Gothenburg; 40.93496°N, 100.15061°W (2), 2 mi S Gothenburg, 1 mi E Hwy 47; 40.89865°N, 100.14839°W (1). WEBSTER: 5.5 mi S, 0.25 mi W Red Cloud; 40.00827°N, 98.52484°W (1 larva).
Specimens not examined (total 1). PHELPS: 0.5 mi N, 2 mi W Wilcox, Sacramento Game Management Area; 40.37255°N, 99.20829°W (1).

Great Plains Narrowmouth Toad (*Gastrophryne olivacea*)
Specimens examined (total 2). GAGE: 1.5 mi E Wymore; 40.12262°N, 96.63374°W (1). WEBSTER: 4 mi S, 1 mi W Red Cloud; 40.03115°N, 98.54170°W (1).

Plains Leopard Frog (*Lithobates blairi*)
Specimens examined (total 21). BUFFALO: 2 mi S, 6 mi E Ravenna; 40.998267°N, 98.798159°W (1 larva), 5.4 mi S, 4.4 mi W Gibbon, Lillian Annette Rose Sanctuary; 40.66223°N, 98.92859°W (1 group of eggs), 5.6 mi S, 4.6 mi W Gibbon, Lillian Annette Rose Sanctuary; 40.66069°N, 98.93391°W (3). DAWSON: 96 Ranch, T11N, R25W, Sec 35, [3 mi S, 1.6 mi E Gothenburg]; 40.88365°N, 100.12949°W (2). DIXON: 5 mi N Allen; 42.48729°N, 96.84485°W (1). FURNAS: 0.7 mi S Arapahoe; 40.29332°N, 99.89772°W (3). RED WILLOW: 0.25 mi S, 0.25 mi E Indianola; 40.23237°N, 100.414221°W (1), 3.75 mi S, 0.75 mi E Indianola; 40.18116°N, 100.40584°W (1), 1 mi S, 1.5 mi E Indianola; 40.22306°N, 100.38897°W (1), 4 mi N, 0.75 mi E Indianola; 40.29256°N, 100.40411°W (1). WEBSTER: 1 mi N, 0-2.25 mi W Guide Rock (1), 8 mi N, 1 mi W Red Cloud; 40.20501°N, 98.53849°W (1), 2.375 mi S, 2.625 mi W Guide Rock; 40.03852°N, 98.37978°W (1), 1 mi N, 7.9 mi W Guide Rock; 40.08874°N, 98.48013°W (1), 0.8 mi S Guide Rock; 40.06019°N, 98.33018°W (1), 5.5 mi S, 0.25 mi W Red Cloud, 40.00827°N, 98.52484°W (1 larva).
Specimens not examined (total 2). BUFFALO: 1 mi S Ravenna; 41.01199°N, 98.91297°W (1). WEBSTER: 0.375 mi S, 2.625 mi W Guide Rock; 40.06734°N, 98.3800°W (1).

Bullfrog (*Lithobates catesbeianus*)
Specimens examined (total 10). BUFFALO: 1.5 mi S Kearney; 40.67801°N, 99.08453°W (1), 2.4 mi S, 4.7 mi E Kearney; 40.66468°N, 98.99762°W (1 group of eggs), 1 mi S, 4.25 mi W Kearney; 40.68534°N, 99.16694°W (2 larvae). DAWSON: 0.5 mi S, Gothenburg on Hwy 47; 40.91916°N, 100.1667°W (1), 1.5 mi S Gothenburg; 40.90455°N, 100.16756°W (1). DIXON: 5 mi N Allen; 42.48729°N, 96.84485°W (1). WEBSTER: 1.5 mi S, 2 mi E Guide Rock; 40.05093°N, 98.29247°W (2),

1 mi S Cowles; 40.15719°N, 98.44809°W (1).
Specimens not examined (total 1). SIOUX: 5.5 mi N, 2 mi W Harrison, Gilbert-Baker Wildlife Area; 42.76638°N, 103.92397°W (1).

Northern Leopard Frog (*Lithobates pipiens*)
Specimens examined (total 25). BUF-FALO: 1 mi S Ravenna; 41.01277°N, 98.91331°W (1). CHERRY: 17 mi S, 5 mi W Nenzel; 42.68069°N, 101.20175°W (2), 8 mi S Nenzel, Niobrara River; 42.80364°N, 101.10396°W (1), 17 mi S, 8.5 mi W Nenzel; 42.67815°N, 101.26869°W (8), 15 mi S Nenzel, 3 mi W of Ranger Station; 42.70923°N, 101.10280°W (2). SIOUX: 2 mi N, 5 mi W Fort Robinson State Park; 42.69781°N, 103.57153°W (1), 16 mi N, 8.5 mi E Harrison; 42.91865°N, 103.71473°W (5), 11 mi N, 10.5 mi E Gilbert-Baker Campground; 42.9255°N, 103.72009°W (2), 5.5 mi N, 2.25 mi W Harrison, Gilbert-Baker Wildlife Area, Monroe Creek; 42.76722°N, 103.92894°W (3).

Plains Spadefoot (*Spea bombifrons*)
Specimens examined (13). CHERRY: 16 mi S, 2 mi W Nenzel; 42.69597°N, 101.14361°W (1). DAWSON: 1 mi N, 1 mi E Gothenburg; 40.94484°N, 100.14160°W (1), 1.5 mi N, 1 mi E Gothenburg; 40.94887°N, 100.14125°W (2). RED WILLOW: 3.75 mi S, 0.75 mi E Indianola; 40.18116°N, 100.40584°W (3), 4 mi N, 0.75 mi E Indianola; 40.29377°N, 100.40462°W (1), 4 mi N, 3.75 mi E Indianola; 40.29524°N, 100.34699°W (1). THOMAS: [Nebraska National Forest], 5 mi S of Fire Tower, Windmill #59 [ambiguous locality; windmill #59 is ~2 mi S of Fire Tower] (1). WEBSTER: 1 mi N, 6.4 mi W Guide Rock; 40.08906°N, 98.45114°W (1), 1 mi N, 2 mi W Guide Rock; 40.08905°N, 98.36844°W (2 larvae).
Specimens not examined (total 12). BUF-FALO: Kearney, South Railroad and D Avenue; 40.69451°N, 99.07629°W (9), Kearney, Kearney State College; 40.70311°N, 99.09987°W (1). FURNAS: 1 mi N, 1.75 mi E Arapahoe; 40.3213°N, 99.86482°W (1). KEARNEY: 9.5 mi N, 1 mi E Axtell; 40.6177°N, 99.10969°W (1).

Barred Tiger Salamander (*Ambystoma mavortium*)

Specimens examined (total 8). BANNER: 10 mi S, 2.5 mi E Gering; 41.67908°N, 103.61991°W (2, one is neotenic). LINCOLN: 5 mi SW Brady; 40.95201°N, 100.39809°W (1). SHERMAN: Litchfield; 41.15694°N, 99.15361°W (2). THOMAS: [Nebraska National Forest], 4 mi S[E] of Fire Tower, Windmill #128, [4.8 mi S, 1.7 mi W Halsey]; 41.83427°N, 100.30198°W (1 neotenic). WEBSTER: 5.5 mi S, 0.25 mi W Red Cloud; 40.00827°N, 98.52484°W (2).

Specimens not examined (total 2). WEBSTER: 5.5 mi S, 0.25 mi W Red Cloud; 40.00827°N, 98.52484°W (2 larvae).

Smallmouth Salamander (*Ambystoma texanum*)

Specimens examined (total 1). RICHARDSON: 2 mi S, 2 mi E Falls City; 40.03169°N, 95.56307°W (1).

Common Snapping Turtle (*Chelydra serpentina*)

Specimens examined (total 4). BUFFALO: 1 mi S, 1 mi W Kearney, Kearney Canal; 40.68512°N, 99.10503°W (1 group of eggs). CHERRY: 17 mi S, 8.5 mi W Nenzel; 42.67815°N, 101.26869°W (1). DAWSON: 2 mi S, 1 mi E Gothenburg; 40.89865°N, 100.14839°W (1). WEBSTER: 4.5 mi S Red Cloud; 40.02272°N, 98.51871°W (1).

Northern Painted Turtle (*Chrysemys picta*)

Specimens examined (total 6). BUFFALO: 0.25 mi N Pleasanton; 40.97472°N, 99.08651°W (1), 2 mi S, 6 mi E Ravenna; 40.998267°N, 98.798159°W (1), 6 mi E Kearney; 40.69936°N, 98.96939°W (1). DAWSON: 2 mi S, 1 mi E Gothenburg; 40.89865°N, 100.14839°W (1), 4 mi S, 1.5 mi E Gothenburg; 40.88271°N, 100.13086°W (1). MERRICK: 5 mi W Central City; 41.11383°N, 98.09724°W (1).

Blanding's Turtle (*Emydoidea blandingii*)

Specimens examined (total 1). CHERRY: 17.5 mi S, 8.75 mi W Nenzel, Schoolhouse Lake; 42.68547°N, 101.2650°W (1).

Ornate Box Turtle (*Terrapene ornata*)

Specimens examined (total 9). ANTELOPE: 3 mi S Clearwater; 42.126364°N,

98.18849°W (1), 3.5 mi S, 3.5 mi E Clearwater; 42.11844°N, 98.12089°W (1). BUFFALO: 1.5 mi S, 1.3 mi W Pleasanton; 40.94549°N, 99.11242°W (1). CUSTER: North of Arnold (1). DAWSON: 1 mi N Gothenburg; 40.94439°N, 100.16047°W (1). KEARNEY: 10 mi N, 1 mi E Axtell; 40.62575°N, 99.10761°W (1). RED WILLOW: 6.25 mi W Indianola; 40.23476°N, 100.53735°W (2). WEBSTER: 5.5 mi S, 0.25 mi W Red Cloud; 40.00827°N, 98.52484°W (1).

Specimens not examined (total 1). CHERRY: 12.5 mi S, 8.75 mi W Nenzel; 42.7481°N, 101.27491°W (1).

Yellow Mud Turtle (*Kinosternon flavescens*)

Specimens examined (total 2). CHERRY: 7 mi S of 20-83 junction; 42.71526°N, 100.5363°W (1). KEARNEY: 3.5 mi S, 0.5 mi E Norman; 40.42902°N, 98.78199°W (1).

Spiny Softshell (*Apalone spinifera*)

Specimens examined (total 4). BUFFALO: Kearney, Kearney Canal west of campus; 40.70237°N, 99.10831°W (1). DAWSON: 2 mi S, 1 mi E Gothenburg; 40.89865°N, 100.14839°W (1), 0.5 mi S Interstate 80, Gothenburg Sand Pits; 40.89827°N, 100.14077°W (1). KEARNEY: 3 mi S, 1.5 mi W Kearney; 40.65467°N, 99.11439°W (1).

Lesser Earless Lizard (*Holbrookia maculata*)

Specimens examined (total 14). ANTELOPE: 3.75 mi S Neligh; 42.07413°N, 98.03005°W (2). CHERRY: 15 mi S, 3 mi E Nenzel; 42.71066°N, 101.04393°W (2), 12 mi S, 1.25 mi W Nenzel; 42.75394°N, 101.12890°W (2). KEARNEY: 5 mi S, 2 mi E Kearney; 40.62653°N, 99.04636°W (1), 9.75 mi N, 1 mi E Axtell; 40.62188°N, 99.10662°W (1). PHELPS: 11 mi N, 1 mi E Funk; 40.62273°N, 99.2304°W (1). RED WILLOW: 0.5 mi S, 1.25 mi W Bartley; 40.24524°N, 100.33725°W (1). THOMAS: Halsey Forest Ranger Station; 41.90142°N, 100.29852°W (2), [Nebraska National Forest], 5 mi S of Fire Tower, between windmills #161-159; 41.81481°N, 100.3391°W (2).

Mountain Short-horned Lizard

(*Phrynosoma hernandesi*)

Specimens not examined (total 1). CHEY-

ENNE: 12 mi S Potter; 41.04732°N, 103.31665°W (1).

Prairie Lizard (*Sceloporus consobrinus*)

Specimens examined (total 9). CHERRY: 16.5 mi S, 2.5 mi W Nenzel; 42.68756°N, 101.15228°W (2). RED WILLOW: 0.5 mi S, 1.25 mi W Bartley; 40.24571°N, 100.33013°W (2). THOMAS: Nebraska National Forest, Halsey Division, Cedar Campground, [0.3 mi S, 1.4 mi W Halsey]; 41.8989°N, 100.29711°W (1), [Nebraska National Forest], 5 mi S of Fire Tower, between windmills #161-159; 41.81481°N, 100.3391°W (1), [Nebraska National Forest], 5.9 mi S, 2.3 mi W Halsey], 1 mi E windmill #161; 41.817451°N, 100.31407°W (1), [Nebraska National Forest], 5 mi S of Fire Tower, 0.5 mi W windmill #161; 41.81741°N, 100.33916°W (1), 14 km S, 6 km W Halsey, Dismal River; 41.77759°N, 100.34302°W (1).

Many-lined Skink (*Plestiodon multivirgatus*)

Specimens examined (total 2). CHERRY: 13.5 mi S, 1 mi W Nenzel; 42.73180°N, 101.12154°W (1). LOGAN: Stapleton Area; 41.48024°N, 100.51286°W (1).

Northern Prairie Skink

(*Plestiodon septentrionalis*)

Specimens examined (total 6). BUFFALO: 3 mi S Gibbon; 40.70430°N, 98.845571°W (1), 5.4 mi S, 4.4 mi W Gibbon, Lillian Annette Rowe Sanctuary; 40.66223°N, 98.92859°W (2), 5.6 mi S, 4.6 mi W Gibbon, Lillian Annette Rowe Sanctuary; 40.66069°N, 98.93391°W (3).

Six-lined Racerunner (*Aspidoscelis sexlineata*)

Specimens examined (total 25). BROWN: 0.5 mi N, 0.5 mi W Long Pine; 42.54361°N, 99.71257°W (1). BUFFALO: 3 mi S Elm Creek; 40.67497°N, 99.37584°W (1), 1 mi S, 7 mi E Kearney; 40.68538°N, 98.9502°W (2), 5 mi S, 0.5 mi W Gibbon; 40.67534°N, 98.85373°W (3). FURNAS: 1.5 mi S, 0.125 mi E Arapahoe; 40.28154°N, 99.89619°W (5). RED WILLOW: 1 mi S, 1.5 mi E Indianola; 40.22306°N, 100.38897°W (1), 0.5 mi S, 1.25 mi W Bartley; 40.24571°N, 100.33013°W (1). THOMAS: [Nebraska National Forest], 5 mi S of Fire Tower, between windmills #161-159; 41.81481°N, 100.3391°W (1), [Nebraska National For-

est], 0.5 mi N windmill 128, 3.5 mi S, 2 mi E Fire Tower; 41.83581°N, 100.30013°W (1). WEBSTER: 0.375 mi S, 2.625 mi W Guide Rock; 40.06734°N, 98.3800°W (4), 1 mi S Cowles; 40.15719°N, 98.44809°W (5).

Eastern Racer (*Coluber constrictor*)

Specimens examined (total 7). CUSTER: 3 mi N, 3 mi E Oconto; 41.18475°N, 99.70445°W (1), 2.5 mi SE Callaway; 41.25959°N, 99.90034°W (1). KEARNEY: 6.75 mi N, 3.5 mi E Minden; 40.59334°N, 98.8859°W (1). RED WILLOW: 1 mi S, 1.5 mi E Indianola; 40.22306°N, 100.38897°W (1). SIOUX: 5 mi N, 3.5 mi W Harrison; 42.76065°N, 103.95219°W (1), 5.5 mi N, 2 mi W Harrison, Gilbert-Baker Wildlife Area; 42.76638°N, 103.92397°W (1). WEBSTER: 4.5 mi S Red Cloud; 40.02272°N, 98.51871°W (1).

Specimens not examined (total 1). RED WILLOW: 5.25 mi S, 0.75 mi E Indianola; 40.16008°N, 100.40481°W (1).

Milk Snake (*Lampropeltis triangulum*)

Specimens examined (total 2). RICHARDSON: 9 mi S, 0.75 mi E Humboldt; 40.03482°N, 95.93211°W (1). THOMAS: Nebraska National Forest, 1 mi W Halsey; 41.90426°N, 100.28835°W (1).

Specimens not examined (total 1). CUSTER: Mason City; 41.2225°N, 99.29833°W (1).

Smooth Green Snake (*Liophorophis vernalis*)

Specimens not examined (total 0). BUFFALO: 5 mi S, 4 mi W Gibbon, Lillian Rowe Sanctuary; 40.67477°N, 98.92168°W (No specimen taken, capture and released individual, verified by C. True, still an entry in catalog).

Great Plains Rat Snake (*Pantherophis emoryi*)

Specimens examined (total 1). FRANKLIN: 1.75 mi S, 1.25 mi W Franklin; 40.07051°N, 98.97660°W (1).

Bullsnake (*Pituophis catenifer*)

Specimens examined (total 14). ANTELOPE: 0.5 mi N, 2.25 mi W Neligh; 42.13603°N, 98.07404°W (1). BUFFALO: 2 mi N, 6 mi E Kearney; 40.72885°N, 98.96935°W (1), 0.25 mi N Pleasanton; 40.97472°N, 99.08651°W (1), 1 mi S, 2 mi W Kearney; 40.68593°N, 99.12359°W (1), 1.5 mi S, 3.5 mi W Pleasanton;

40.94547°N, 99.15448°W (1). DAWSON: 3 mi S Gothenburg; 40.88368°N, 100.16753°W (1). FRANKLIN: 0.125 mi W Riverton; 40.08944°N, 98.76136°W (1). FURNAS: 1 mi S, 0.5 mi E Arapahoe; 40.28878°N, 99.88821°W (1), 1.5 mi S, 0.75 mi E Arapahoe; 40.28154°N, 99.88619°W (1). KEARNEY: 7.5 mi N, 0.5 mi W Axtell; 40.58821°N, 99.13591°W (1), 10.5 mi N, 2.5 mi W Minden; 40.64774°N, 98.99902°W (1). WEBSTER: 1.75 mi S, 1 mi E Red Cloud; 40.06290°N, 98.50198°W (1), 2 mi S, 0.5 mi E Red Cloud; 40.05998°N, 98.50788°W (1), 0.5 mi S, 2.5 mi W Guide Rock; 40.0657°N, 98.37732°W (1).

Western Rat Snake (*Scotophis obsoletus*)

Specimens examined (total 1). RICHARDSON: 9 mi S, 0.75 mi E Humboldt; 40.03482°N, 95.93211°W (1).

Specimens not examined (total 1). GAGE: 0.5 mi N, 2 mi E Barneston; 40.05607°N, 96.53780°W (1).

Plains Blackhead Snake (*Tantilla nigriceps*)

Specimens examined (total 1). FURNAS: 1 mi W Arapahoe; 40.30629°N, 99.91713°W (1).

Western Worm Snake (*Carphophis vermis*)

Specimens examined (total 1). RICHARDSON: 12.5 mi N, 3 mi E Falls City, Indian Cave State Park; 40.24052°N, 95.54314°W (1).

Ringneck Snake (*Diadophis punctatus*)

Specimens examined (total 5). BUFFALO: 1 mi N, 2 mi E Odessa; 40.71616°N, 99.21811°W (1). DAWSON: 6 mi S Gothenburg; 40.84023°N, 100.16361°W (1). SHERMAN: 0.5 mi N, 1.5 mi W Litchfield; 41.16263°N, 99.18212°W (1). SIOUX: 3.5 mi N, 2.5 mi W Harrison; 42.73766°N, 103.93229°W (1). WEBSTER: no specific locality (1).

Western Hognose Snake (*Heterodon nasicus*)

Specimens examined (total 4). CHERRY: 16.25 mi S, 2 mi W Nenzel; 42.691°N, 101.13891°W (1). KEARNEY: 2 mi S, 4 mi E Kearney, Fort Kearny Area; 40.67059°N, 99.14087°W (1), 7.75 mi N Minden; 40.60806°N, 98.95134°W (1). THOMAS: [Nebraska National Forest], 7 mi S Ranger Station; 41.79962°N, 100.31602°W (1).

Eastern Hognose Snake (*Heterodon platirhinos*)

Specimens examined (total 1). CUSTER: 10 mi N Cozad; 41.00761°N, 99.98520°W (1).

Northern Water Snake (*Nerodia sipedon*)

Specimens examined (total 4). BUFFALO: Kearney; 40.6999°N, 99.08325°W (1). DAWSON: 3 mi S Gothenburg, 1 mi E Headquarters; 40.88747°N, 100.14197°W (1), 1 mi W of Highway 47, Platte River, Gothenburg; 40.91499°N, 100.18529°W (1). THOMAS: 12.2 mi S, 3.7 mi W Thedford, Dismal River, Jameson Landing; 41.80106°N, 100.64643°W (1).

Specimens not examined (total 2). RICHARDSON: 9 mi S, 0.75 mi E Humboldt; 40.03482°N, 95.93211°W (1). WEBSTER: 0.25 mi S, 2 mi W Guide Rock; 40.07122°N, 98.36824°W (1).

Redbelly Snake (*Storeria occipitomaculata*)

Specimens examined (total 3). BUFFALO: 1 mi S Odessa; 40.68704°N, 99.25587°W (1). DAWSON: 2 mi S, 2 mi E Gothenburg; 40.88365°N, 100.12949°W (2).

Terrestrial Garter Snake

(*Thamnophis elegans*)

Specimens examined (total 3). SIOUX: 5 mi N, 2.5 mi W Harrison, Gilbert-Baker Wildlife Area; 42.76067°N, 103.93130°W (1), 2 mi N, 5 mi W Fort Robinson State Park; 42.69781°N, 103.57153°W (2).

Specimens not examined (total 3). SIOUX: 5 mi N, 2.5 mi W Harrison, Gilbert-Baker Wildlife Area; 42.76067°N, 103.93130°W (1), 5.5 mi N, 2.5 mi W Harrison, Gilbert-Baker Wildlife Area, Monroe Creek; 42.76651°N, 103.93123°W (1), 1.5 mi W on south fork of Soldiers Creek; 42.68835°N, 103.59545°W (1).

Plains Garter Snake (*Thamnophis radix*)

Specimens examined (total 14). BUFFALO: 3 mi S, 1.5 mi W Kearney; 40.6568°N, 99.11327°W (1). CHERRY: 17 mi S, 7.5 mi W Nenzel; 42.68007°N, 101.24928°W (1), 15 mi S, 9 mi W Nenzel; 42.70916°N, 101.27847°W (7). DAWSON: 1105 17th Street, Gothenburg; 40.93496°N, 100.15061°W (1). KEARNEY: 2.75 mi S, 2 mi W Kearney; 40.66115°N, 99.12365°W (1). RED WILLOW: 4 mi N, 0.75 mi E Indianola;

40.29256°N, 100.40411°W (2). SHERMAN: Loup City; 41.27559°N, 98.96675°W (1). Specimens not examined (total 1). CHERRY: 17 mi S, 8.5 mi W Nenzel; 42.67815°N, 101.26869°W (1).

Common Garter Snake (*Thamnophis sirtalis*)

Specimens examined (total 14). BUFFALO: 0.75 mi S, 9.25 mi E Kearney; 40.6885°N, 98.9069°W (2), 0.5 mi S, 10 mi E Kearney; 40.69347°N, 98.8943°W (2), 0.5 mi S, 11.125 mi E Kearney; 40.6927°N, 98.87123°W (1), 2 mi W Kearney; 40.69931°N, 99.12171°W (1), 2.75 mi S Elm Creek; 40.6786°N, 99.38043°W (1), 2 mi S Elm Creek; 40.68868°N, 99.37985°W (1), 5.5 mi S, 0.75 mi W Gibbon; 40.66939°N, 98.85963°W (1). DAWSON: 96 Ranch, T11N, R25W, Sec 35, [3 mi S, 1.6 mi E Gothenburg]; 40.88365°N, 100.12949°W (1). HARLAN: 2.75 mi S, 1 mi E Orleans; 40.09124°N, 99.43542°W (1). KEARNEY: 3 mi S, 6 mi E Kearney; 40.65524°N, 98.97065°W (1). RED WILLOW: 1 mi W, 0.5 mi W Bartley [ambiguous locality in UNK catalog] (1). WEBSTER: 0.375 mi S, 2.625 mi W Guide Rock; 40.06734°N, 98.3800°W (1).

Specimens not examined (total 8). CHERRY: 15 mi S, 9 mi W Nenzel; 42.70916°N, 101.27847°W (3), 18.5 mi S, 8.75 mi W Nenzel; 42.65896°N, 101.26925°W (1), 17 mi S, 8.5 mi W Nenzel; 42.67815°N, 101.26869°W (1). KEARNEY: 3 mi S, 1.5 mi W Kearney; 40.65467°N, 99.11439°W (1). SIOUX: South fork of Soldier Creek [ambiguous local in UNK catalog] (1). WEBSTER: 0.375 mi S, 2.625 mi W Guide Rock; 40.06734°N, 98.3800°W (1).

Lined Snake (*Tropidoclonion lineatum*)

Specimens examined (total 3). DAWSON: 1.5 mi N of Highway 30, Willow Island; 40.91001°N, 100.07211°W (1), 1 mi E Gothenburg; 40.93036°N, 100.14164°W (1). SHERMAN: Litchfield; 41.15694°N, 99.15361°W (1).

Timber Rattlesnake (*Crotalus horridus*)

Specimens examined (total 1). GAGE: 1 mi S Barneston; 40.03394°N, 96.57458°W (1).

Prairie Rattlesnake (*Crotalus viridis*)

Specimens examined (total 15). BUFFALO:

2 mi N, 2.875 mi W Kearney; 40.72844°N, 99.13886°W (2), 3.5 mi N Odessa; 40.75281°N, 99.25542°W (1). CUSTER: 1 mi S, 2 mi E Callaway; 41.27753°N, 99.88411°W (1), 9 mi N Custer County line on Hwy N of Cozad; 41.16924°N, 99.9414°W (1), 5 mi N Arnold; 41.49431°N, 100.19513°W (1). FURNAS: 0.5 mi N, 3 mi E Cambridge; 40.28905°N, 100.10945°W (1). RED WILLOW: 0.25 mi N, 6.25 mi W Indianola; 40.23943°N, 100.53764°W (1), 6 mi W Indianola; 40.23637°N, 100.53222°W (1). THOMAS: 14 km S, 6 km Halsey; 41.77759°N, 100.34302°W (2), Seneca; 42.04272°N, 100.83166°W (1). SIOUX: 14 mi N, 0.75 mi W Harrison; 42.8879°N, 103.89801°W (1), 1.25 mi S, 7 mi W Harrison; 42.67042°N, 104.01922°W (1), 9 mi N, 2 mi W Harrison; 42.8215°N, 103.92539°W (1). Specimens not examined (total 3). HOOKER: 1 mi W Seneca; 42.04243°N, 100.85104°W (1). SIOUX: 14 mi N, 0.75 mi W Harrison; 42.8879°N, 103.89801°W (1), 9.5 mi N, 1.5 mi W Harrison; 42.82653°N, 103.91064°W (1).

ACKNOWLEDGEMENTS

All specimens in the UNK collection were collected by other researchers in the past. Thus, we thank all those that contributed to depositing such important specimens in the collection throughout the years. Some individuals that contributed >5 specimens from Nebraska include D. R. Friskopp, M. Peyton, C. E. True, K. D. Steege, and N. J. Czaplewski. C. E. True

(Professor Emeritus, Department of Biology, UNK) was the former curator of the collection. We thank D. D. Fogell, R. E. Ballinger, and one anonymous reviewer for examining an earlier version of this manuscript. This research was funded in part through the Undergraduate Research Fellows program at the University of Nebraska at Kearney.

LITERATURE CITED

- Ballinger, R. E., J. D. Lynch, and G. R. Smith. 2010. Amphibian and reptiles of Nebraska. Rusty Lizard Press, Oro Valley, Arizona. 400 pp.
- Fogell, D. D. 2010. A field guide to the amphibians and reptiles of Nebraska. Institute of Agriculture and Natural Resources, University of Nebraska-Lincoln. 158 pp.
- Lynch, J. D. 1985. Annotated checklist of the amphibians and reptiles of Nebraska. Transactions of the Nebraska Academy of Sciences 13: 33–57.
- Hudson, G. E. 1942. The amphibians and reptiles of Nebraska. Nebraska Conservation Bulletin 24: 1–146.
- Smith, H. M. 1978. Guide to field identification: amphibians of North America. Golden Press, New York. 160 pp.
- Smith, H. M. and E. D. Brodie, Jr. 1982. Guide to field identification: reptiles of North America. Golden Press, New York, New York. 240 pp.

About the Kansas Herpetological Society

The KHS is a non-profit organization established in 1974 and designed to encourage education and dissemination of scientific information through the facilities of the Society; to encourage conservation of wildlife in general and of the herpetofauna of Kansas in particular; and to achieve closer cooperation and understanding between herpetologists, so that they may work together in common cause. All interested persons are invited to become members in the Society. Membership dues per calendar year are \$15.00 (U.S., Regular), \$20.00 (outside North America, Regular), and \$20.00 (Contributing) payable to the KHS. Send all dues to: KHS Secretary, 5438 SW 12th Terrace Apt. 4, Topeka, Kansas 66604.

KHS Meetings

The KHS holds an annual meeting in the fall of each year. The meeting is, minimally, a two day event with lectures and presentations by herpetologists. All interested individuals are invited to make presentations. The annual meeting is also the time of the Saturday night social and fund-raising auction.

Field Trips

The KHS hosts two or more field trips each year, one in the spring and one in the fall. Field trips are an enjoyable educational experience for everyone, and also serve to broaden our collective understanding of the distribution and abundance of the amphibians, reptiles, and turtles in Kansas. All interested persons are invited to attend.

Editorial Policy

The Journal of Kansas Herpetology, currently issued quarterly (March, June, September, and December), publishes all society business.

Submission of Manuscripts

As space allows, *JKH* publishes all manner of news, notes, and articles. Priority of publishing is given to submissions of Kansas herpetological subjects and by KHS members; however all submissions are welcome. The ultimate decision concerning the publication of a manuscript is at the discretion of the Editor. Manuscripts should be submitted to the Editor in an electronic format whenever possible. Those manuscripts submitted in hard copy may be delayed in date of publication. Manuscripts should be submitted to the Editor no later than the 1st of the month prior to the month of issuance. All manuscripts become the sole possession of the Society, and will not be returned unless arrangements are made with the Editor. In the interest of consistency and comprehension, the standardized common names used in *JKH* will follow those used in *Amphibians, Reptiles, and Turtles in Kansas* (Collins, Collins, and Taggart, 2010).

Reprints & Artwork

JKH publishes original peer-reviewed submissions under the Articles and Notes sections. Upon review, acceptance, and publication, Portable Document File (PDF) copies are provided gratis to the author on request. Figures and photographs submitted with manuscripts are welcome, but must be sized appropriately by authors for this journal's column sizes (i.e., 19.5 or 39 picas wide). Particular attention should be paid to reduction of text on the figures.

Societal Awards, Grants, and Recognitions

Distinguished Life Members

Individuals selected as *Distinguished Life Members* are chosen by the KHS Executive Council based on their distinguished published research papers on Kansas herpetology.

Bronze Salamander Award

Established in 1987, this Award is presented to those individuals whose efforts and dedication to the Kansas Herpetological Society go far beyond the normal bounds. The recipients of this Award have given exemplary service to the KHS, and are presented with an elegant bronze sculpture of a Barred Tiger Salamander.

The Howard K. Gloyd - Edward H. Taylor Scholarship

Established in 1993, *The Gloyd-Taylor Scholarship* is presented annually by the Kansas Herpetological Society to an outstanding herpetology student. The scholarship is a minimum of \$300.00 and is awarded on the basis of potential for contributing to the science of herpetology. Students from grade school through university are eligible.

The Alan H. Kamb Grant for Research on Kansas Snakes

KHS members only are eligible to apply for *The Alan H. Kamb Grant for Research on Kansas Snakes*, which was established in 2001. The recipient of the grant will be selected by the KHS Awards Committee. A minimum award of \$300 is given annually.

The Henry S. Fitch - Dwight R. Platt Award for Excellence in Field Herpetology

KHS members only are eligible to apply for *The Henry S. Fitch - Dwight R. Platt Award for Excellence in Field Herpetology*, which was established in 2010. The recipient of the grant will be selected by the KHS Awards Committee. The award will be given annually when sufficient funds have been raised to establish a trust.

The George Toland Award for Ecological Research on North American Herpetofauna

This CNAH Award was established in 2008 in recognition of the scientific career of George Fredrick Toland, whose life-long interest in herpetology was passed on to so many of his students. The recipient of this award will be selected by the KHS Awards Committee. A minimum award of \$200 is given annually at the end of the KHS meeting.

The Suzanne L. & Joseph T. Collins Award for Excellence in Kansas Herpetology

This CNAH Award was established by Westar Energy in 1998 in recognition of the achievements of Suzanne L. Collins and Joseph T. Collins. In even years, the Award is bestowed upon an individual who, in the preceding two calendar years, had published a paper of academic excellence on native species of Kansas amphibians, reptiles, and/or turtles, and in odd years, the Award is given to an individual who, in a juried competition, took the best photograph of a Kansas amphibian, reptile, or turtle. *The Collins Award* is minimally \$1,000.00, and is neither a grant nor a scholarship. No nominations or applications can be made for it.

KANSAS HERPETOLOGICAL SOCIETY
ATTN: DR. EVA A. HORNE, TREASURER
DIVISION OF BIOLOGY - ACKERT HALL
KANSAS STATE UNIVERSITY
MANHATTAN, KANSAS 66506

ADDRESS SERVICE REQUESTED

NON PROFIT ORGANIZATION
U. S. POSTAGE
PAID
LAWRENCE, KANSAS 66044
PERMIT NO. 222