

KANSAS  
HERPETOLOGICAL  
SOCIETY



KHS Newsletter, No. 49

September 1982

NINTH ANNUAL MEETING

Saturday and Sunday

13-14 November 1982

Downs Auditorium

Museum of Natural History, University of Kansas

Lawrence

Program

Saturday, 13 November

NOON - Registration at entrance to Downs Auditorium

1:00 pm- Welcome by KHS President JOHN TOLLEFSON

1:15 pm- JOYCE HARMON, Kansas Fish and Game Commission. "Fish and Game Education Programs."

2:15 pm- KHS General Business Meeting and Election of Officers, KHS President JOHN TOLLEFSON presiding.

2:45 pm- Coffee Break plus Group Photo by LARRY MILLER on Museum front steps.

3:30 pm- JOHN SIMMONS, University of Kansas. "The Andes, The Amazon, and the Disappearing Forest."

4:30 pm- Announcements plus Slide Show (please bring your 10 best slides and tell us all about them).

5:30 pm- Dinner Break

7:30 pm- Beer Social and KHS Auction in Trail Room of the Kansas Union, next door to the Museum.

(continued on next page...)

Program (continued) for Ninth Annual KHS Meeting

Sunday, 14 November

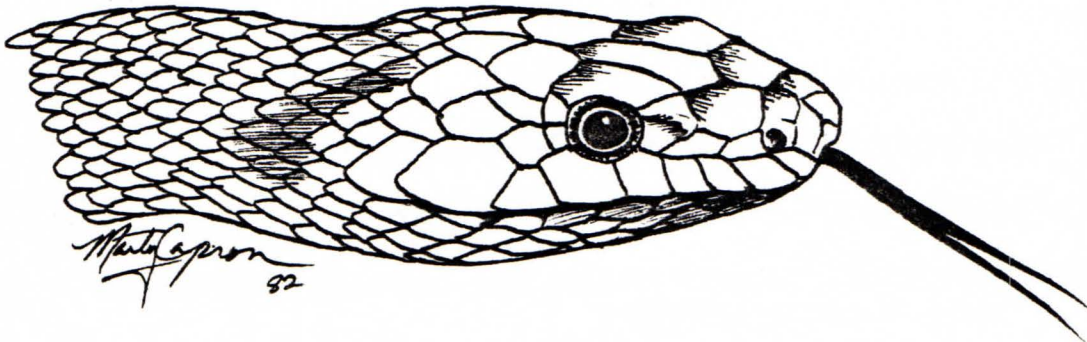
9:30 am- DAVID BARKER, Dallas Zoo. "Rattlesnake round-ups."

10:30 am- Coffee Break

11:00 am- JONATHON CAMPBELL, University of Kansas. "Snakes of the genus Bothrops."

NOON - Adjournment

NOTE NOTE: All KHS members and other interested individuals are invited to attend this meeting. Please bring herp-oriented items to donate to the KHS auction. If you have any questions regarding the meeting, contact Joseph T. Collins at (913) 864-4920, or Rose Etta Kurtz at (913) 864-4540.



SECOND INTERNATIONAL ZOO HORTICULTURE CONFERENCE

For those of you curious to know what holds frogs up, the Sedgwick County Zoo is sponsoring the 2nd International Zoo Horticulture Conference, 18-20 October of 1982. Papers include sessions on Poisonous Plants, Irrigation Systems, Rain Forest Exhibits and several related topics. Further information may be obtained from:

Virginia Wall, Horticulturist  
Sedgwick County Zoo  
5555 Zoo Blvd.  
Wichita, Kansas 67212 (316) 942-2212